

ESS Laboratory VOC 5035

Low Level Sample Collection Procedure

- **Number of Vials:** 2 per sample
- **Vial Description:** Pre-weighed VOA vial with 5ml water, and a stir bar.
- **Sampling Device:** One Cut Syringe per sample location
- **Sampling Procedure:**
 - Push the cut syringe into the soil until the syringe is filled between the 4 and 5 ml marks. (This is approximately 5 grams of soil)
 - Remove the syringe containing the soil.
 - Wipe the exterior of the syringe clean.
 - Use the plunger to deposit the contents of the syringe into the VOA vial.
 - Immediately cap the vial.
 - Use a new cut syringe for each new sample location.
- **Sample Shipping:**
 - Samples must be kept cool with ice or ice packs ($4 \pm 2^{\circ}$ C)
 - Samples must be delivered to the laboratory within 48 hours of sampling.
 - A Low Level **Trip Blank** must accompany each batch of low level samples. A Trip Blank is a VOA vial with 5mls water, and a stir bar. No soil is added.

* For additional information call ESS Laboratory: 401-461-7181

“OVER”

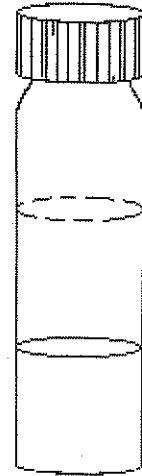
control # 10.5035

R. 1 5/24/05

ESS Laboratory VOC 5035

High Level Sample Collection Procedure

- **Number of Vials:** 1 per sample
- **Vial Description:** Pre-weighed VOA vial with 15ml methanol and a meniscus mark.
- **Sampling device:** One Cut Syringe per sample location
- **Sampling Procedure:**
 - Use the syringe to add approximately 15 grams of soil to the vial. When approximately 15 grams of soil is in the vial the level of methanol will be even with the drawn meniscus mark.
 - Wipe off any soil that may be on the threads of the vial then immediately cap the vial.
- **Sample Shipping:**
 - Samples must be kept cool with ice or ice packs ($4 \pm 2^{\circ}\text{C}$)
 - Samples must be analyzed within 14 days.
 - A High Level **Trip Blank** must accompany each batch of high level samples. A Trip Blank is a VOA vial with 15mls methanol. No soil is added.



← Fill with soil so methanol reaches this line.

Percent Solids Determination

- The percent solids must to be determined for each sample location.
- **Vial Description:** VOA vial with no preservative.
- **Sampling Device:** Scoopula or similar spatula
- **Sampling Procedure:** Use a scoopula, spatula or syringe to fill the VOA vial $\frac{3}{4}$ full. Immediately cap the vial.

“OVER”

control # 10.5035

R. 1 5/24/05